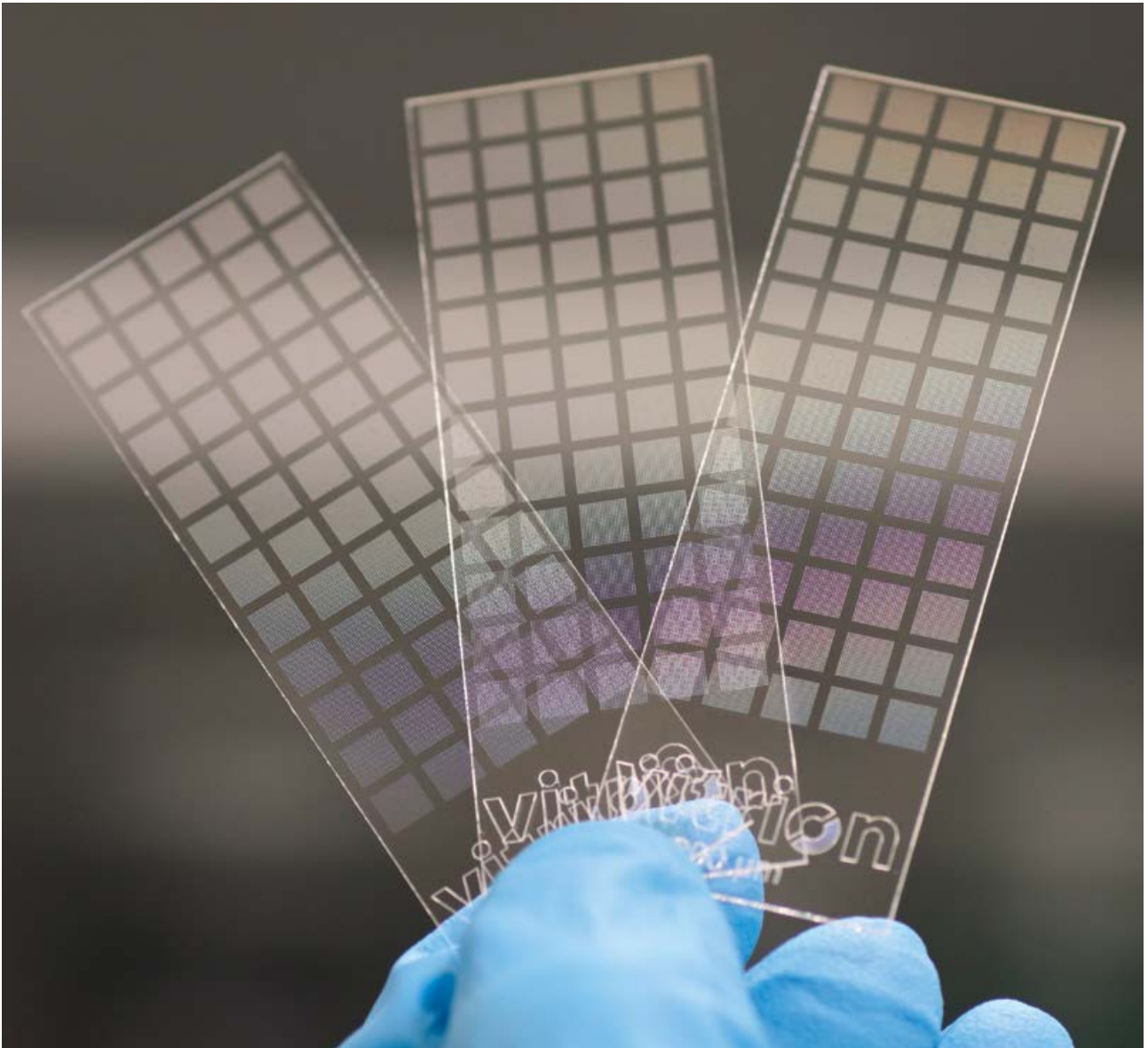


# PicoWell Glass Arrays

## Enhancing the Significance of your Analysis



[www.vitron.com](http://www.vitron.com)

**vitron**

# High-Definition PicoWell Glass Arrays

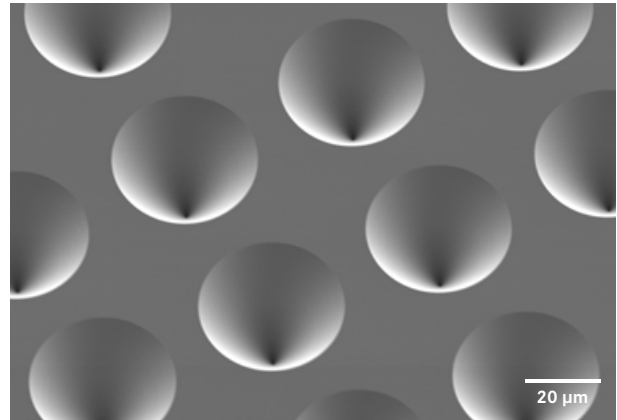
## All Dimensions can be adapted to your needs. Example:

- Glass thickness: 0.4 mm
- Outer dimension: 26 mm x 76 mm
- PicoWell diameter\*: 50  $\mu\text{m}$
- PicoWell volume\*: 28 pl
- PicoWell pitch: 200  $\mu\text{m}$
- Number of arrays: 5 x 12
- Coatings on request

\*Nominal value

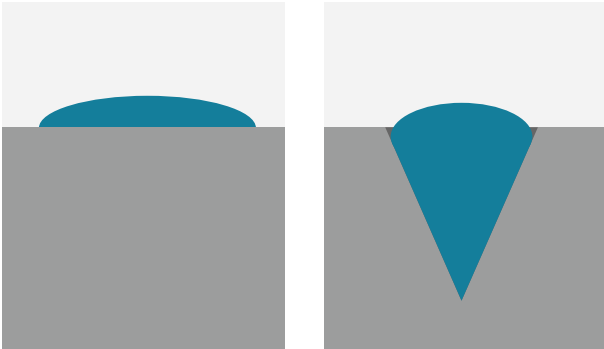


High-definition PicoWell glass arrays



Glass with cone-shaped PicoWells

## Comparison of Processing Methods



Left: The standard today – spotting on flat glass surfaces.  
Right: Glass slides with PicoWells – made with LPKF LIDE Technology.

## Benefits of spotting on glass slides with PicoWells

- Physical barrier suppresses coalescences of droplets at close distance – maximizes the utilization of the available area, increased information density (more experiments on single chip!)
- At same volume of droplet a longer optical path provides higher contrast – higher sensitivity (lower detection limits), better reliability of results  
Printing/jetting in PicoWells reduces splashes and cross-contamination of neighboring samples
- Less surface – less evaporation

**LPKF**  
Laser & Electronics

Vitrion is a brand  
of LPKF Group



Made in Germany

**Headquarters (Germany):** LPKF Laser & Electronics AG Phone +49 (5131) 7095-0 [www.lpkf.com](http://www.lpkf.com)

**North/Central America:** Phone +1 (503) 454-4200 [sales@lpkfusa.com](mailto:sales@lpkfusa.com); **China:** Phone +86 (22) 2378-5318 [sales.china@lpkf.com](mailto:sales.china@lpkf.com);

**Japan:** Phone +81 (0) 47 432 5100 [info.japan@lpkf.com](mailto:info.japan@lpkf.com); **South Korea:** Phone +82 (31) 689 3660 [info.korea@lpkf.com](mailto:info.korea@lpkf.com)

